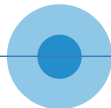











P  **WERSIDE**®

Accessories, Modules & Kits



	AC DC INTERFACE MODULES	3
	BRACKETS AND MOUNTING KITS	6
	CIRCUIT BREAKER	7
	CURRENT SENSORS	8
	DIN RAIL ACCESSORIES	9
	DIN RAIL ENCLOSURE	10
	ENVIRONMENT SENSORS	10
	POWER SUPPLY BACKUP	11
	TIME & SYNCHRONIZATION	13



RM8 - RELAY EXTENSION MODULE

You can now turn your PQube 3 into a powerful controller, and command the shedding of loads to protect your main distribution circuit from tripping.

The RM8 extension relay module snaps easily to your PQube3 (also PQube 3e) and its 8 relays are fully programmable.

This allows you to customize your load shedding scheme, by assigning incremental thresholds, or by applying the scheme to protect up to 4 circuits. And the PQube3 power Analyzer measures, reports in real time and records the power, VA, VARs and Power factor of all the circuits monitored

*Note: RM8 module relay needs to be programmed using the PQube 3 configurator.
Part Number: RM8-08R8-XXXX



VAT1-600: THREE-PHASE AC/DUAL DC VOLTAGE ATTENUATOR

The perfect solution for monitoring two sets of three-phase AC voltages. For example:

- Primary and secondary side of transformers
- Input and output of a three-phase UPS

Also a perfect solution to monitor an additional two HVDC channels. For example: input and output of 480VAC to 380 VDC rectifiers – data centers

Order Part Number: VAT1-600-xxxx



ATT1-600 V - AC/DC VOLTAGE ATTENUATOR ±600 VDC / 300 VAC

Compact voltage attenuator module for connection to PQube Classic or PQube 3 analog channels. Great for DC data centers and other applications where high voltage DC monitoring is required. Can also be used to monitor high voltage AC.

PQube Classic Part Number: ATT1-600V-XXXX
PQube 3 Part Number: ATT1-600V-PQ3-XXXX



ATT1-1200 V - AC/DC VOLTAGE ATTENUATOR ± 1200 VDC / 600 VAC

Compact voltage attenuator module for connection to PQube Classic or PQube 3 analog channels. Great for DC data centers and other applications where high voltage DC monitoring is required. Can also be used to monitor high voltage AC.

PQube Classic Part Number: ATT1-1200V-XXXX

PQube 3 Part Number: ATT1-1200V-PQ3-XXXX



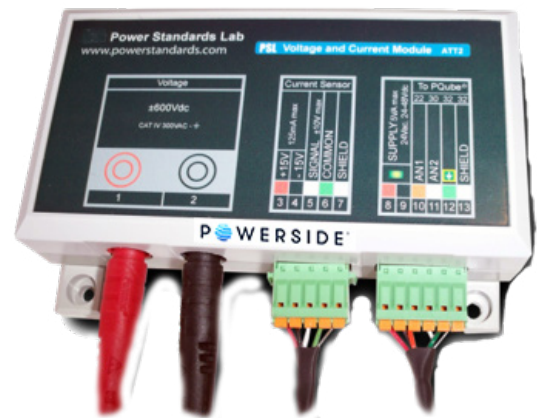
ATT2-600V - AC/DC VOLTAGE / CURRENT ± 600 VDC/300 VAC

The perfect solution for monitoring two sets of three-phase AC voltages. For example:

Primary and secondary side of transformers
Input and output of a three-phase UPS

Also a perfect solution to monitor an additional two HVDC channels. For example: input and output of 480VAC to 380 VDC rectifiers – data centers

Order Part Number: VAT1-600-xxxx

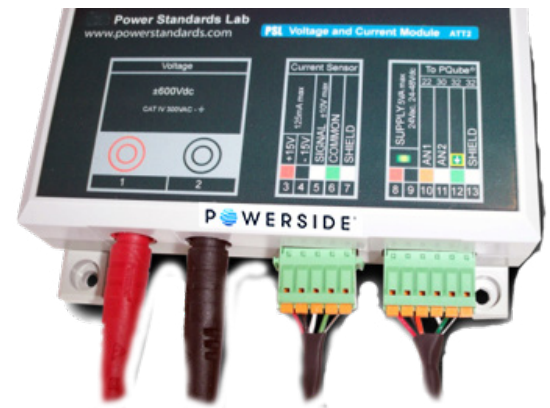


ATT2-1200 V - AC/DC VOLTAGE / CURRENT ± 1200 VDC/600 VAC

Compact voltage and current module for connection to PQube Classic or PQube 3 analog channels. Great for applications where high voltage DC monitoring is required. Can also be used to monitor high voltage AC.

PQube Classic Part Number: ATT2-1200V-XXXX

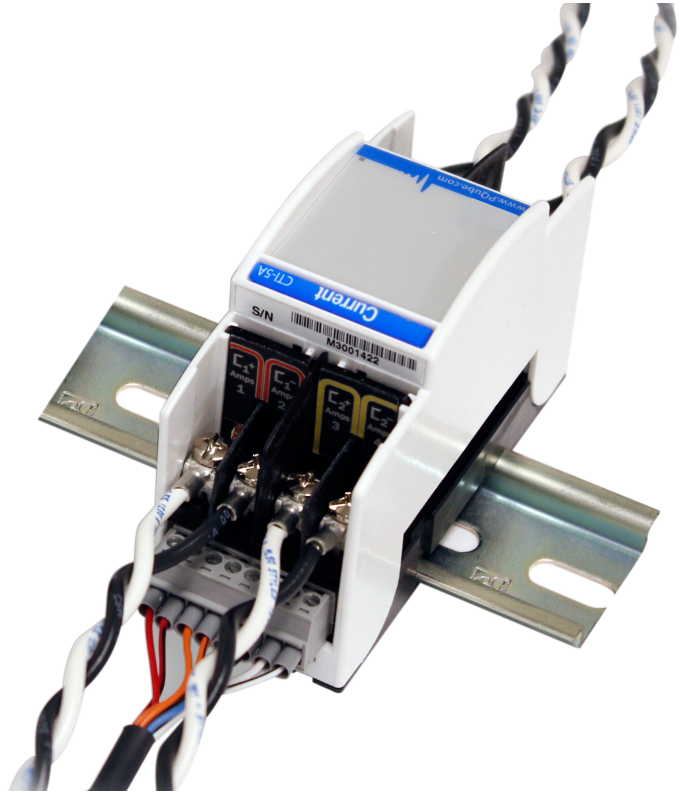
PQube 3 Part Number: ATT2-1200V-PQ3-XXXX



CTI-5A CT INTERFACE MODULE

Connect your PQube 3 to five-Amp output current transformers. Ideal for measuring currents from existing metering/protection/instrumentation current transformers.

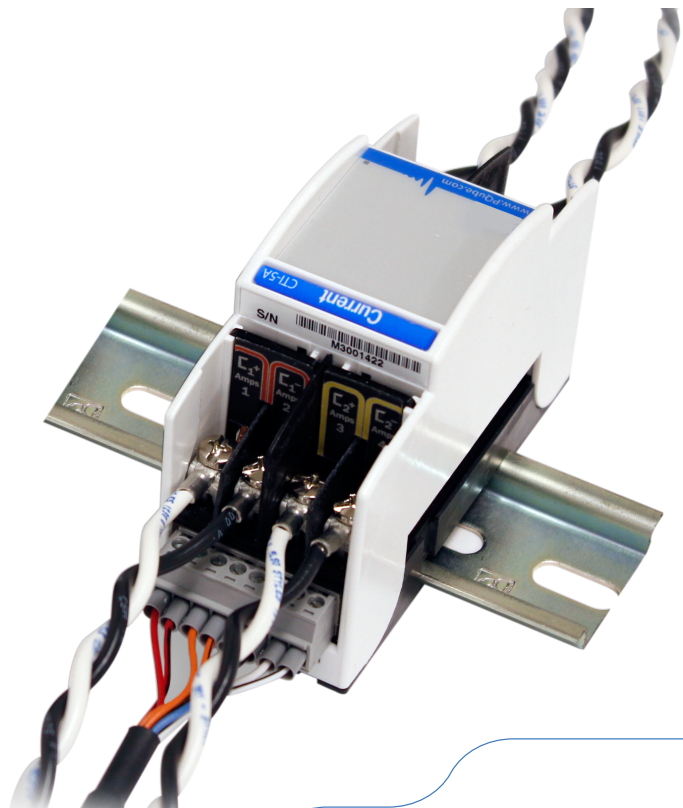
Order Part Number: CTI-5A-XX



CTI-1A CT INTERFACE MODULE

Connect your PQube 3 to one-Amp output current transformers. Ideal for measuring currents from existing metering/protection/instrumentation current transformers.

Order Part Number: CTI-1A-XX



POLE MOUNTING KIT FOR REMOTE ANTENNA BRACKET

Includes a special stainless-steel sharp-toothed adapter, and a stainless-steel strap for poles up to 14 inches (36 cm) diameter.

Order Part Number: [PMB-SS-00](#)



MAGNETIC MOUNTING KIT FOR REMOTE ANTENNA BRACKET

Use these six powerful Neodymium magnets to mount your Remote Antenna Bracket onto an electric panel enclosure, or any other indoor flat steel surface.

Order Part Number: [MAGKIT-RAB-00](#)



REMOTE ANTENNA BRACKET

This clever anodized-aluminum bracket lets you mount your Precision GPS Receiver and your 4G Cell Modem antennas almost anywhere.

It comes with stainless-steel screws and washers for mounting to any wall.

Also included is a stainless-steel strap for poles from 2 to 3.5 inches (5 to 9 cm) diameter.

Order Part Number: [RAB-00](#)



CB-1P - 1AMP SINGLE PHASE CIRCUIT BREAKER

Single-phase circuit breaker for protecting PQube in single-phase applications. Simple DIN rail mounting allows breaker to be snapped in alongside your PQube modules. UL 1077: 277/480 volt, 1A rating.

Order Part Number: CB-1P-277/480V-1A



CB-3P - 1AMP THREE PHASE CIRCUIT BREAKER

Three-phase circuit breaker for protecting PQube in three-phase applications. Simple DIN rail mounting allows breaker to be snapped in alongside your PQube modules. UL 1077: 277/480 volt, 1A rating.

Order Part Number: CB-3P-277/480V-1A



POWERSIDE ULTRA-PRECISE CT SERIES

Powerside Ultra-Precise calibrated shielded split-core CT are specifically designed to meet demanding accuracy applications. This is accuracy on both current amplitude AND current angle accuracy.

The Powerside Ultra-Precise CT's exceed the most demand standard:
ANSI C12.20 Class 0.2 revenue grade *
(*) Class 0.2S IEC 62053-22
5A – 300A
Amplitude Accuracy: Typical $\pm 0.1\%$
Angle Accuracy: Typical $\pm 0.07^\circ$
Output: 333 mV at rated current



POWERSIDE PRECISE CT SERIES

Powerside Precise CT – SCN Series
5A-600A
Typical accuracy: $\pm 0.2\%$
Typical angle accuracy: 0.5° typical (5A – 600A)
Powerside Precise CT – SC4 Series
800A – 6000A
Typical accuracy : $\pm 0.6\%$
Typical angle accuracy: ± 0.5



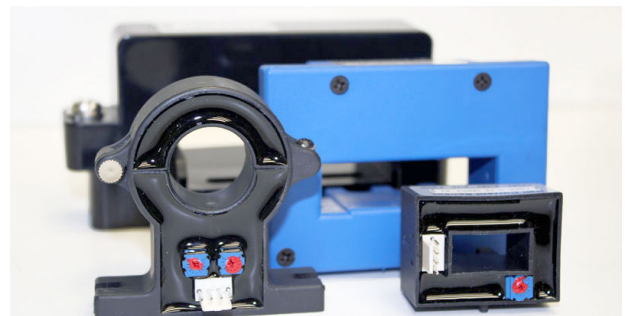
FCT-XX-3000A FLEXIBLE CURRENT SENSOR

Easy Installation —v connects directly to PQube 3 (integrator and external power not required)



DC HALL EFFECT CURRENT SENSORS

For use with ATT2 – AC/DC Voltage/Current Module



ALUMINUM DIN-RAIL KIT

Your PQube easily snaps onto standard 35 mm DIN rail. For your convenience Powerside offers the DRK kit which includes one piece of aluminum DIN rail (approximately 10.630 inches (270 mm long), as well as two end stops for locking the PQube modules in place.

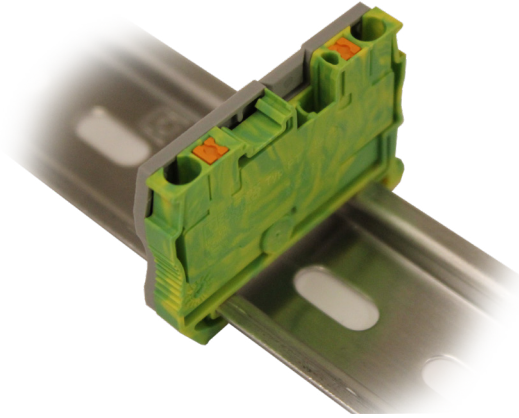
Order Part Number: DRK-270-00



SHIELD WIRE GROUNDING TERMINAL

Grounding terminal with end cap – 2 ports for grounding up to 8 shielded wires.

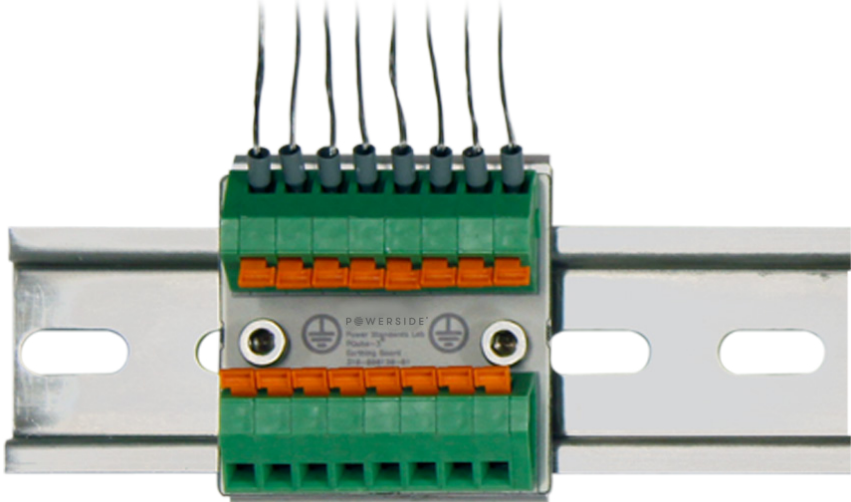
Order Part Number: TB-GND-6.2MM-XX



SHIELD WIRE GROUNDING BLOCK

Grounding block – individual terminals up to 16 shielded wires.

Order part number: SWG-16-00



DIN Rail Enclosure

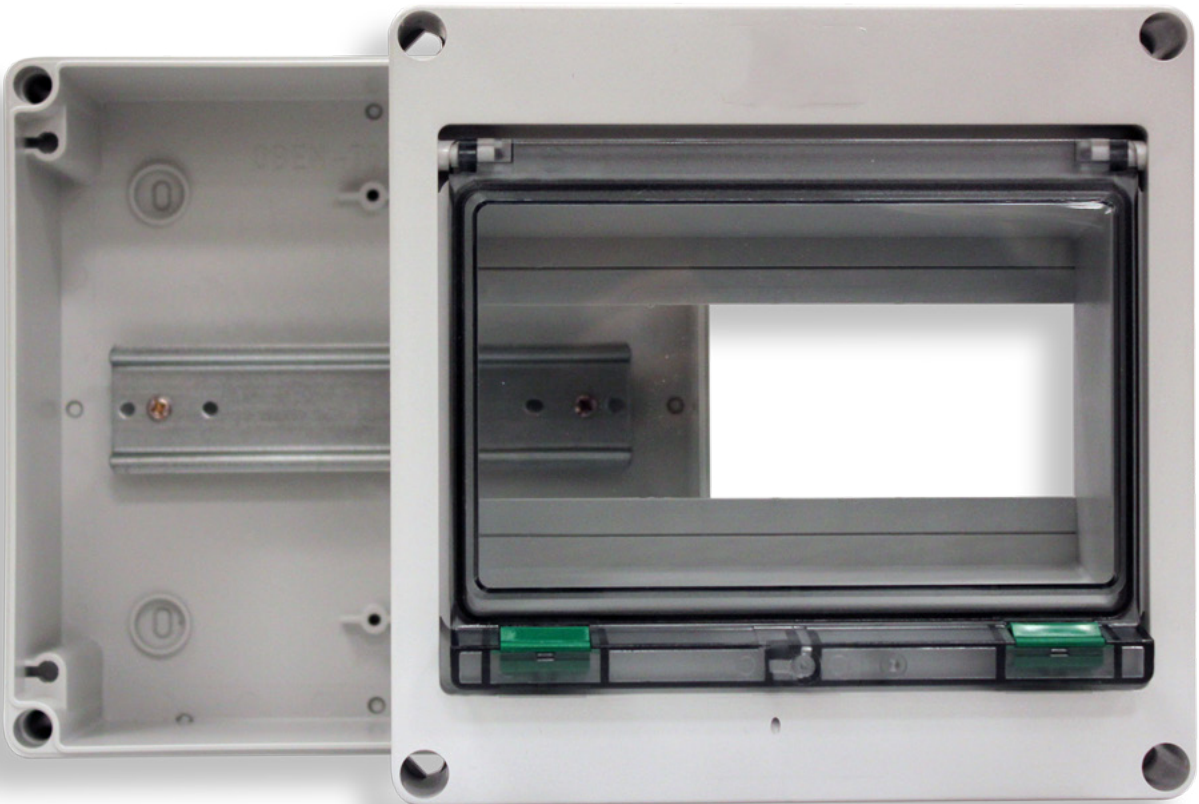
IP65 DIN Rail Enclosure for PQube 3 and PQube Classic

If you want your PQube 3 or PQube Classic in its own enclosure, either because you don't have room in your electric panel or you want your PQube to be more visible and accessible, then mount it inside a standard DIN rail enclosure. It's your easiest and least expensive option.

Order Part Number: [ENCL-EXT-775-XX](#)

Order Part Number: [ENCL-EXT-1075-XX](#)

Order Part Number: [ENCL-EXT-10145-XX](#)



ENV2 - ENVIROSENSOR™

Measure ambient temperature, humidity, barometric pressure, and three-axis acceleration – indicative measurements

- Temperature: -20°C ~ +80°C (-4°F ~ +176°F)
- Humidity: 0% ~ 100% RH (most useful for 20% ~ 80% RH)
- Barometric pressure: resolution better than 0.001 hPa
- Acceleration: ±2g, ±4g, ±8g ranges
- Configurable sensitivity
- Mechanical shock events – detect accidental bumps to sensitive equipment
- Seismic disturbances – records pre- and post-earthquake accelerations
- Tilt events – high sensitivity for detecting structural changes
- User configurable thresholds for mechanical shock, and seismic triggers
- Acceleration recording: 480 samples at 32 accelerations-per-second
- PQube 3 supports up to two EnviroSensor Probes – use for comparison (for example, detect clogged air filters with differential barometric pressure)

Order Part Number: ENV2-THPA-2M-xx

Order Part Number: ENV-CABLE-5M-XX

Order Part Number: ENV2-EXT-CABLE-5M-xx



PM1 POWER MANAGER MODULE

Power your PQube 3 from an electrical outlet : 100~240 VAC 50/60 Hz
Note: PQube 3 by default powers up from 24 VAC, 24~48 VDC sources directly

Order Part Number: PM1-100~240-00



PM2 POWER MANAGER MODULE WITH AUX OUTPUT

Power your PQube 3 from an electrical outlet : 100~240 VAC 50/60 Hz
The PM2 module has 4 outputs for accessories (24 VDC up to 5 W total)
Note: PQube 3 by default powers up from 24 VAC, 24~48 VDC sources directly.

Order Part Number: PM2-100~240-00



UPS1 UNINTERRUPTABLE POWER SUPPLY

Provides up to 30 minutes of backup power to PQube 3. Also backs up modules and accessories connected to PM2 Module. UPS operation and charging LED indicators.

Order Part Number: UPS1-30-XXXX



EXTENDED POWER BACKUP PACKAGE: UPS2 + XB1 + XB1D

The package contains: external battery controller (UPS2) + Battery pack (XB1) + DIN rail mount (XB1D)

- Provides extended power backup (up to three hours)
- Wide temperature range (-25°C~60°C)
- Controls up to three Powerside XB1 battery packs (60 min/pack)

Order Part Number: UPS2-XBC-XXXX

Order Part Number: BATTPACK-6V-2.5Ah-XB1-XX

Order Part Number: BATTBRKT-XB1D-XX



EXTENDED POWER BACKUP PACKAGE WITH ACCESSORY BACKUP: UPS3 + XB1 + XB1D

The package contains: external battery controller (UPS3) + Battery pack (XB1) + DIN rail mount (XB1D)

- Provides extended power backup (up to three hours)
- Wide temperature range (-25°C~60°C)
- Controls up to three Powerside XB1 battery packs (60 min/pack)
- Backs up accessories up to 5W

Order Part Number: UPS3-XBC-XXXX

Order Part Number: BATTPACK-6V-2.5Ah-XB1-XX

Order Part Number: BATTBRKT-XB1D-XX



XB1 - EXTRA BATTERY PACK FOR UPS2 AND UPS3

For use with UPS2 and UPS3 Battery Controller. Provides up to 60 minutes of backup for PQube 3. DIN rail mount for XB1 Extra Battery Pack also available. Battery is rated at -40°C to +80°C temperature range.

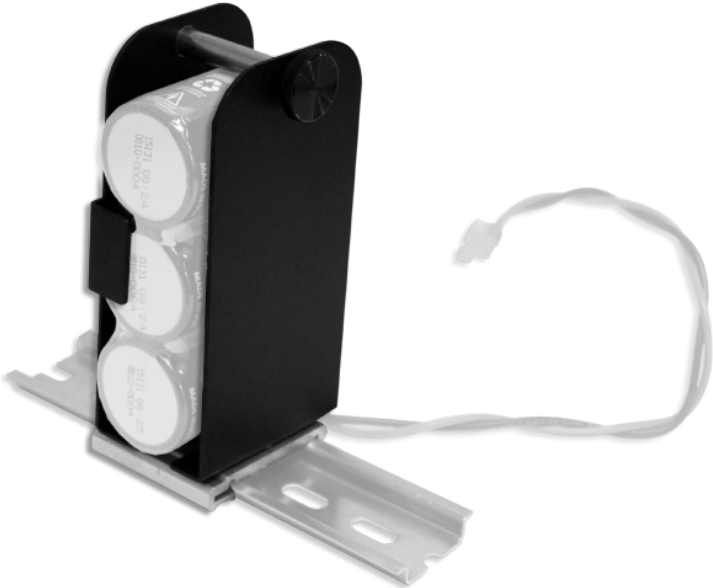
Order Part Number: BATTPACK-6V-2.5Ah-XB1-XX



XB1D - EXTERNAL DIN RAIL MOUNT FOR XB1

DIN rail mount for XB1 External Battery Pack.

Order Part Number: BATTBRKT-XB1-XX



GPS SYNCHRONIZATION PACKAGE FOR PQUBE 3

This bundle package allows you to time stamp precisely the measurements of the PQube 3.

The package consists of :

- An optical isolated remote GPS receiver and antenna (GPS1-ISOL-XXXX)
- A snap-in synchronization module for PQube 3 (MS1-PPS-XT-XXXX)
- Z 9m (30ft) cable to connect the synch module to the receiver and antenna (CABLE-GPS-8P-RJ45-09M-00)

Order Part Numbers: [GPS-SYNC-MS1-GPS1](#)



GPS RECEIVER AND ANTENNA CABLES FOR RUGGED AND PORTABLE INSTALLATIONS

Indoor and outdoor rated cables for remotely mounting your cellular antennas and GPS receivers

Cell modem antenna cables

- Typically two antennas/cables used per modem
- Use our three meter N-N-style indoor/outdoor cable to remotely connect your outdoor N-style cell antenna to the PQ3iaB-rugged with cell modem ready option.
- Order Part Number: CABLE-N-N-03M-00
- Use our six meter indoor/outdoor SMA to N-style cable to remotely connect your outdoor N-Style cell antenna to the PQ3iaB-pluggable with cell modem ready option.
- Order Part Number: CABLE-SMA-N-06M-00
- GPS1 receiver cables
- Remotely connect a Powerside GPS1 Receiver to the PQ3iaB-rugged with GPS1 option. Use our four meter outdoor rated IP67-RJ45 to RJ45 cable
- Order Part Number: CABLE-IP67-RJ45-RJ45-04m-00
- Remotely connect a Powerside GPS1 receiver to the PQ3iaB-pluggable with GPS1 option. Use our seven meter 8-pin plug to RJ45 outdoor cable
- Order Part Number: CABLE-8P-RJ45-07m-00
- Connect your PQube 3 MS1 module to the GPS1 receiver in an indoor application, use our ten meter indoor rated 8-pin plug to RJ45 indoor cable

Order Part Number: [CABLE-MS1-10m-00](#)





www.powerside.com

Powerside®, PQube®, and EnviroSensor® are trademarks of Power Survey Ltd. and Power Standards Lab.
© 2020 Powerside. All rights reserved.

P  **WERSIDE**®